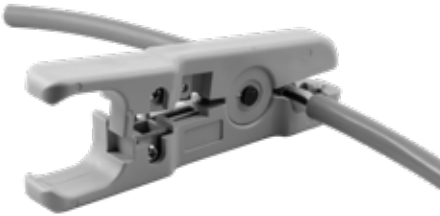


OPTI-FLOAT[®] CABLE SPLICE KIT

STRIPPER



CUTTER



SET OF SPLICES



PART# OPTI-SK1

INSTRUCTIONS FOR SPLICING THE FIBER OPTIC CABLE

1. To insure a good, low loss splice, cut the fibers with the supplied cutter only. Use the holes designated 2.2mm.
2. The splice is designed for inline as well as panel mounting. Remove the panel mounting nut if splices are to be made inline.
3. Completely loosen the hand tightened cinch nuts but do not remove them.
4. Push one fiber into one end of the splice about 3/4" (20mm). Push the other fiber into the other end of the splice until it firmly touches the first fiber.
5. Tighten both cinch nuts finger tight. Do not over tighten. Do not use any tools.
6. The splice is complete.
7. Use splices only if absolutely necessary. It is best to order floats with the correct length of cable. For best results, use splices only on cables where the total cable length will not exceed 66 feet (20m) and use only one set of splices per cable. Contact Cox Research if you have more demanding requirements.



225.756.3271 > 800.910.9109 > f: 225.755.1030
P.O. Box 77808 > Baton Rouge, LA 70879

www.optifloat.com